

M63 • M71 • M80

D.C. Electric motors

PERFORMANCES

Type	Shapes	Voltage (V)	1400 rpm		2000 rpm		2800 rpm	
			Power (kW)	Amperes (A)	Power (kW)	Amperes (A)	Power (kW)	Amperes (A)
M63.H50	B3 / B34 / B35 B5 / B14	12	0,03	2,9	0,05	5	0,07	7
		24	0,03	1,5	0,05	2,5	0,07	3,5
M63.H75	B3 / B34 / B35 B5 / B14	12	0,05	4,9	0,08	7,5	0,1	10
		24	0,05	2,5	0,08	3,8	0,1	5
M63.H100	B3 / B34 / B35 B5 / B14	12	0,08	7,5	0,11	11	0,15	15
		24	0,15	7,2	0,22	11	0,3	15
M71.H70	B3 / B34 / B35 B5 / B14	12	0,3	30	0,35	35	0,4	40
		24	0,3	15	0,35	17,5	0,4	20
M71.H100	B3 / B34 / B35 B5 / B14	12	0,45	40	0,5	50	0,55	54
		24	0,45	20	0,5	25	0,55	27
M71.H120	B3 / B34 / B35 B5 / B14	12	0,5	50	0,6	60	0,65	64
		24	0,75	37	0,8	40	0,95	49
M80.H100	B3 / B34 / B35 B5 / B14	12	0,45	40	0,5	50	0,55	54
		24	0,45	20	0,5	25	0,55	27
M80.H120	B3 / B34 / B35 B5 / B14	12	0,5	50	0,6	60	0,65	64
		24	0,75	37	0,8	40	0,95	49
M80.H140	B3 / B34 / B35 B5 / B14	12	0,55	54	0,6	60	0,65	64
		24	0,8	40	1	50	1,3	64

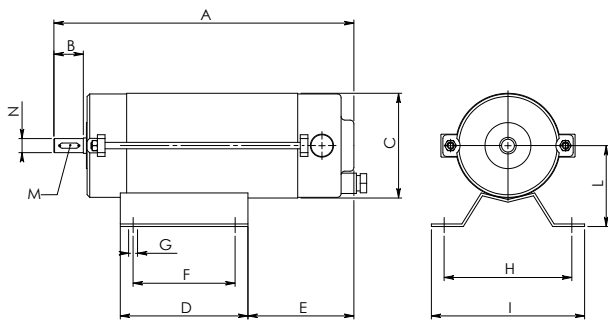
12-24V: DIRECT CURRENT

B3 - B34 - B35: with feet

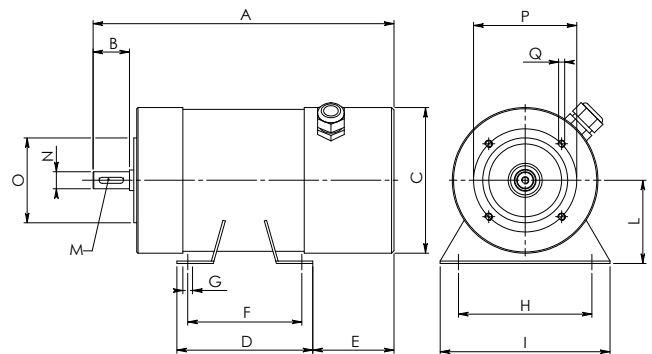
B5 - B14: without feet

DIMENSIONS AND WEIGHTS

M63 / B3



M71 / B3 - M80 / B3



Type	A	B	C	D	E	F	G	H	I	L	M	N	Weight (kg)
M63.H50 / B3	200	23	80	100	45	80	7	100	120	63	4x15	11	3
M63.H75 / B3	225	23	80	100	70	80	7	100	120	63	4x15	11	3,5
M63.H100 / B3	250	23	80	100	95	80	7	100	120	63	4x15	11	4
M71.H70 / B3	250	30	117	110	70	90	8	112	140	71	5x20	14	7
M71.H100 / B3	300	30	117	110	120	90	8	112	140	71	5x20	14	9
M71.H120 / B3	300	30	117	110	120	90	8	112	140	71	5x20	14	10
M80.H100 / B3	300	40	117	125	120	100	9	125	160	80	6x30	19	9,5
M80.H120 / B3	300	40	117	125	120	100	9	125	160	80	6x30	19	10,5
M80.H140 / B3	320	40	117	125	140	100	9	125	160	80	6x30	19	12

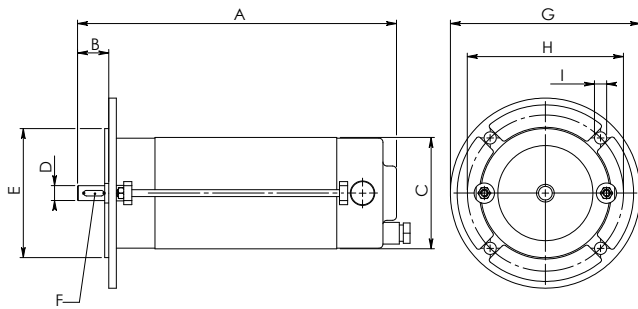
Measures in millimeter (mm), dimensions approximated

M63 • M71 • M80

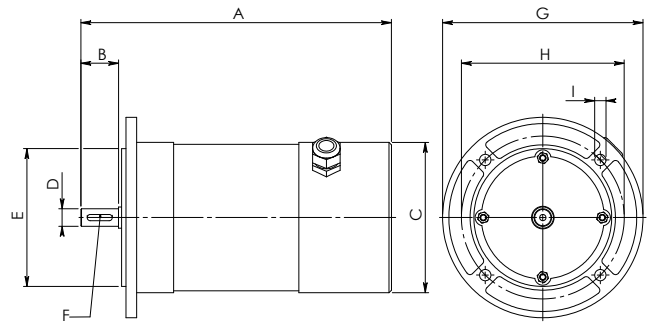
D.C. Electric motors

DIMENSIONS AND WEIGHTS

M63 / B5



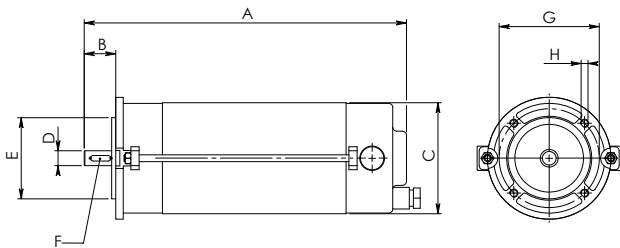
M71 / B5 - M80 / B5



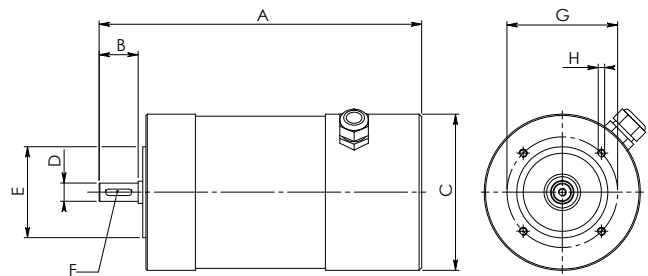
Type	A	B	C	D	E	F	G	H	I	Weight (kg)
M63.H50 / B5	200	23	80	11	95	4x15	140	115	9,5	3
M63.H75 / B5	225	23	80	11	95	4x15	140	115	9,5	3,5
M63.H100 / B5	250	23	80	11	95	4x15	140	115	9,5	4
M71.H70 / B5	250	30	117	14	110	5x20	160	130	9,5	7
M71.H100 / B5	300	30	117	14	110	5x20	160	130	9,5	9
M71.H120 / B5	300	30	117	14	110	5x20	160	130	9,5	10
M80.H100 / B5	300	40	117	19	130	6x30	200	165	11,5	9,5
M80.H120 / B5	300	40	117	19	130	6x30	200	165	11,5	10,5
M80.H140 / B5	320	40	117	19	130	6x30	200	165	11,5	12

Measures in millimeter (mm), dimensions approximated

M63 / B14



M71 / B14 - M80 / B14



Type	A	B	C	D	E	F	G	H	Weight (kg)
M63.H50 / B14	200	23	80	11	60	4x15	75	M5	3
M63.H75 / B14	225	23	80	11	60	4x15	75	M5	3,5
M63.H100 / B14	250	23	80	11	60	4x15	75	M5	4
M71.H70 / B14	250	30	117	14	70	5x20	85	M6	7
M71.H100 / B14	300	30	117	14	70	5x20	85	M6	9
M71.H120 / B14	300	30	117	14	70	5x20	85	M6	10
M80.H100 / B14	300	40	117	19	80	6x30	100	M6	9,5
M80.H120 / B14	300	40	117	19	80	6x30	100	M6	10,5
M80.H140 / B14	320	40	117	19	80	6x30	100	M6	12

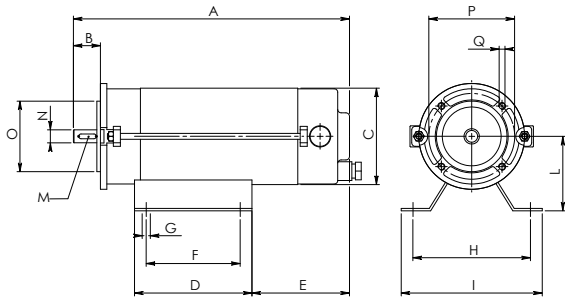
Measures in millimeter (mm), dimensions approximated

M63 • M71 • M80

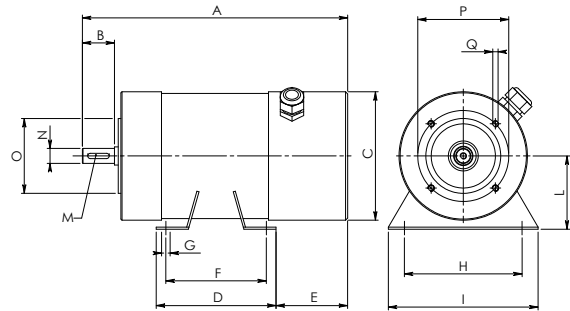
D.C. Electric motors

DIMENSIONS AND WEIGHTS

M63 / B34



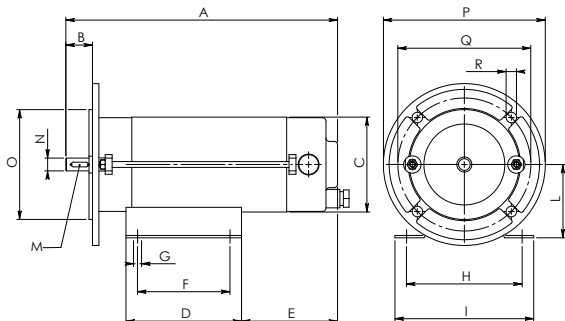
M71 / B34 - M80 / B34



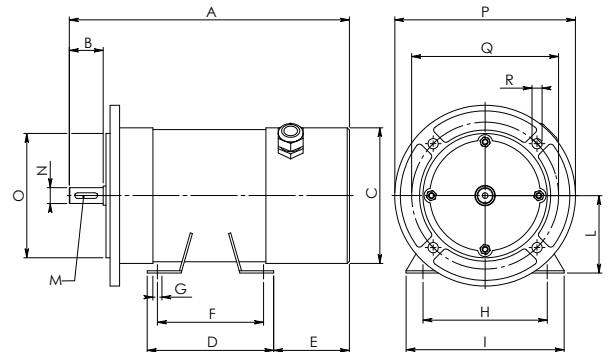
Type	A	B	C	D	E	F	G	H	I	L	M	N	O	P	Q	Weight (kg)
M63.H50 / B34	200	23	80	100	45	80	7	100	120	63	4x15	11	60	75	M5	3
M63.H75 / B34	225	23	80	100	70	80	7	100	120	63	4x15	11	60	75	M5	3,5
M63.H100 / B34	250	23	80	100	95	80	7	100	120	63	4x15	11	60	75	M5	4
M71.H70 / B34	250	30	117	110	70	90	8	112	140	71	5x20	14	70	85	M6	7
M71.H100 / B34	300	30	117	110	120	90	8	112	140	71	5x20	14	70	85	M6	9
M71.H120 / B34	300	30	117	110	120	90	8	112	140	71	5x20	14	70	85	M6	10
M80.H100 / B34	300	40	117	125	120	100	9	125	160	80	6x30	19	80	100	M6	9,5
M80.H120 / B34	300	40	117	125	120	100	9	125	160	80	6x30	19	80	100	M6	10,5
M80.H140 / B34	320	40	117	125	140	100	9	125	160	80	6x30	19	80	100	M6	12

Measures in millimeter (mm), dimensions approximated

M63 / B35



M71 / B35 - M80 / B35



Type	A	B	C	D	E	F	G	H	I	L	M	N	O	P	Q	R	Weight (kg)
M63.H50 / B35	200	23	80	100	45	80	7	100	120	63	4x15	11	95	140	115	9,5	3
M63.H75 / B35	225	23	80	100	70	80	7	100	120	63	4x15	11	95	140	115	9,5	3,5
M63.H100 / B35	250	23	80	100	95	80	7	100	120	63	4x15	11	95	140	115	9,5	4
M71.H70 / B35	250	30	117	110	70	90	8	112	140	71	5x20	14	110	160	130	9,5	7
M71.H100 / B35	300	30	117	110	120	90	8	112	140	71	5x20	14	110	160	130	9,5	9
M71.H120 / B35	300	30	117	110	120	90	8	112	140	71	5x20	14	110	160	130	9,5	10
M80.H100 / B35	300	40	117	125	120	100	9	125	160	80	6x30	19	130	200	165	11,5	9,5
M80.H120 / B35	300	40	117	125	120	100	9	125	160	80	6x30	19	130	200	165	11,5	10,5
M80.H140 / B35	320	40	117	125	140	100	9	125	160	80	6x30	19	130	200	165	11,5	12

Measures in millimeter (mm), dimensions approximated